

Organization and set-up of needed services and support for installation

Peter Rådahl

HoD Engineering and Integration Support Division

www.europeanspallationsource.se

2017-06-14

Outline

- ESS site and status
- Strategies and decisions
- Installation Support Coordination
- Focal points at ESS and In Kind partners
- Services and activities
- Requirements and Communication
- Central Technical Support/Services
- On-going activities
- Conclusions

ESS site and status related to installation



ESS is responsible for operating the site from 2020

The CF-division and the contractor Skanska coordinates the site

- BAS U responsible
- Some services on site are mandatory
- Other services are optional but ESS need to respect the ERIC procurement rules for those services
- Complementary services are underway

The ESS organization and its services on site are under establishment

First buildings/areas have been handed over to ESS

2 access models for installation activities

- Partial/Full access of a building or area
- Parallel access

Skanska (Civil contractor)

ESS

2017

2020

- Some key strategies and decisions have been established in the beginning of 2017
 - Establishment of a bridging function to mitigate the fact that we are a greenfield site and organization
 - Recruitment of an ESS installation coordinator
 - Implementation of a centralized installation support across ESS
 - Centralized coordination for
 - Spatial integration
 - Cables
 - Mechanical workshop

Installation Support Coordination (ISC)

- A bridging function covering ESS central functions and subprojects with a mission to provide a coordinated installation support
- Ensure the pre-requisites for installation (communication, procedures and resources) are in place
- Meet the needs of services and support from
 - ESS work packages
 - Installation coordinators
- Create a smooth transition of the existing Skanska services and the owned/coordinated site into ESS ownership

Members of the ISC



Peter Rådahl - Leader

Meredith Shirey - Stand in

ESS Subprojects

Nick Gazic - Accelerator Installation coordinator

Tobias Lexholm - Target Installation coordinator

Antinio Bianchi - NSS Installation coordinator

Hector Novella - ICS Installation coordinator

Andreas Lundström- CF Interface lead

Central functions

Peter Jacobsson - ES&H

Mattias Skafar - Quality

Meredith Shirey - Procurement

Jörgen Larsson - Logistics

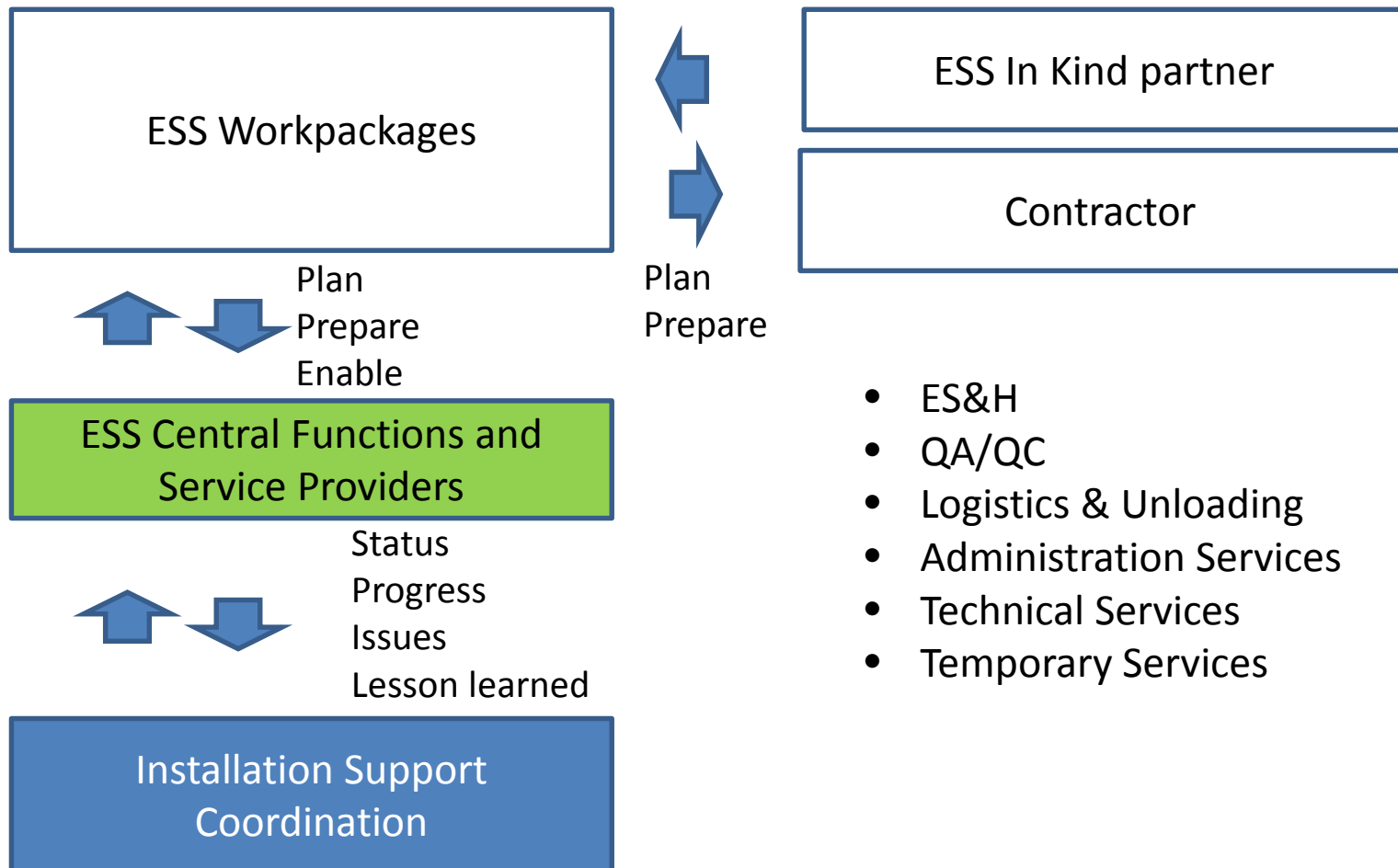
Therese Welander - Administration Services

Peter Radahl - Technical Services

First ISC-activities during 2017

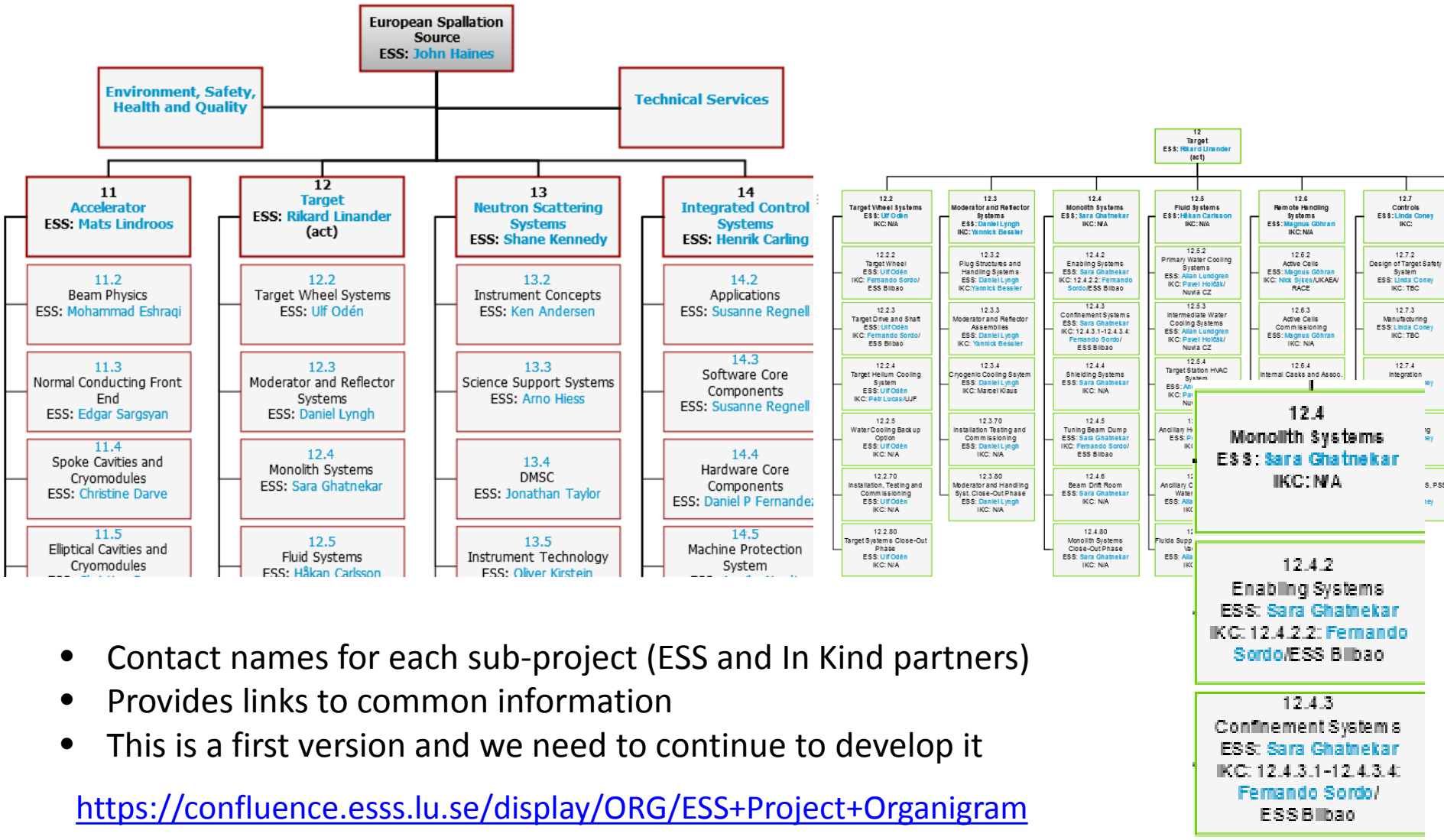
- Focus on lesson learned from the first installations
- Build up the understanding of the sub-projects need for services
- Identify and address potential issues/challenges to management before it occurs
- Create a close interaction with site
- Follow progress and prioritize the work on the installation procedures and guiding documents
- Close the gaps until the ESS Installation Coordinator is recruited
- Create awareness about the installation phase across ESS

Planning and providing ESS wide installation services



- ES&H
- QA/QC
- Logistics & Unloading
- Administration Services
- Technical Services
- Temporary Services

Focal points at ESS and In Kind partners



- Contact names for each sub-project (ESS and In Kind partners)
- Provides links to common information
- This is a first version and we need to continue to develop it

<https://confluence.ess.lu.se/display/ORG/ESS+Project+Organigram>

Services and activities

Frameworks and in-house capabilities

Stores and material



Resources



Manufacturing



Assembly

Shuttles and housing



Shift work/Night work



On site Service/Support

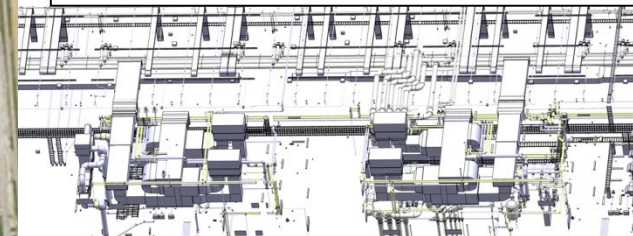
Cleaning



Waste



Operation and Maintenance



- | | |
|---------------------|-----------------------------|
| 1.- SP0154B---V-G02 | Sprinkler |
| 2.- VS0250---V-G02 | Heating, cooling & Plumbing |
| 3.- PS0155---V-G02 | Process System & Piping |
| 4.- E03-6---V-G02 | Electrical |
| 5.- V02-57---V-G02 | Ventilation |

Access and Security



80 trucks (22 tons)
each month



Handling



Rad environment

Network, phones, WIFI

Services and activities

Frameworks and in-house capabilities

Stores and material

Resources

Manufacturing

Assembly



SAFE WORK!

Modules and housing

Shift work/Night work



ESS Processes, Rules and Guidelines integrated with Skanska

Cleaning

Waste

New ESS specific rules

ESS

Contractors

In Kind



- 02 Sprinkler
- Heating, cooling & Plumbing
- Process System & Piping
- Electrical
- Ventilation

- 2.- VS0250---V-G02
- 3.- PS0155---V-G02
- 4.- E03-6---V-G02
- 5.- V02-57---V-G02

Access and Security



80 trucks (22 tons)
each month



Handling

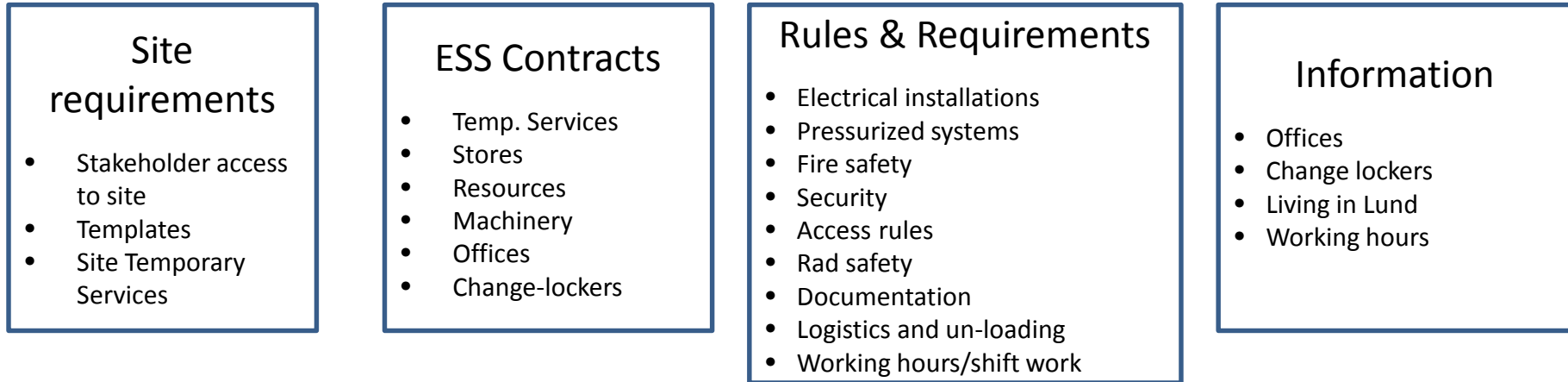


Rad environment

Network, phones, WIFI

Requirements and communication

Requirements and information related to installation come from many different stakeholders



Which we are now organizing in an easy and accessible way

Booklet

Information package

- Living in Lund
- Tranportation
- Access to Site

Installation Process

- Rules and activities for preparing and executing installation
- References to ESS rules and templates

Services

- Technical Services
- Administrative Services

Central Technical Support/Services



Engineering and Integration Support Division
HoD Peter Rådahl

PIM Programme Manager – Karen Jonsdottir
Cable coordination – Jörgen Persson
PIM Content Manager – J. Meyer

Installation Support Group
GL Vacant

PLM and Process Support Group
GL Henrik Lindblad

Machine Engineering Service Group
GL Fabien Rey (Acting)

Design and Engineering Group
GL Magnus Täcklind

Framework agreements

- Installation personnel
- Machinery and tooling
- Temporary services

Procedures and guidelines
Database to keep track of machinery, lifting equipment etc.

Training/Support of

- Plant/Product Lifecycle mgmt.
- Design/Support tools

Functionality to support

- Up-loading of documentation
- Configuration control/Baselining

Requirements for

- Consolidation/mgmt. of documentation

Spatial Integration

- 3D/2D Design configuration control
- Laser Scanning

Survey, Alignment and Metrology

Manufacturing

- Framework agreements
- Central Workshop

Framework agreements and permanent staff

- Mechanical design
- Electrical and I&C Design
- Plant/Process Design
- Strength/CFD analysis

Procedures and guidelines

Areas that ISC are addressing right now



ESS

Site/Skanska



ESS support/services

ESS sub-project
including In-Kind and
contractors

- Implementation of needed Framework Agreements
- Preparing and aligning information and communication related to installation
- Identifying needs of services and appoint clear ownership
- Find ways of how the CF-division and site organization can support the ESS organization
 - Temporary services
 - Scope transfer
 - Installation
- "Business model" for services e.g. coordination, budgeting and how to provide services to sub-projects, In-Kind partners and contractors
- A Temporary Technical Center on site
 - Survey across the organization is on-going
 - Consists of workshop, Material storage (bolts and nuts etc.)

Conclusions

- Important strategies/decisions related to installation is set and we have started to implement those decisions.
- The ISC function has become an important arena where we share experiences, address issues and plan for the future
- The recruitment of the ESS installation coordinator is on-going
- ESS has full focus to establish needed framework agreements